



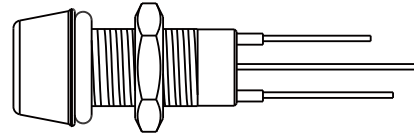
## CATALOGUE

## LED Indicator



## Range Overview

▾ Receptacle



## Specification

Identifications	M8 LED (Plastic or Metal)
Description	Receptacle with LED light
LED Size	Metal LED: $\phi 3\text{mm}$ , $\phi 5\text{mm}$ Plastic LED: $\phi 3\text{mm}$
Material	Connector Body: Metal: Copper Alloy, Nickel Plated Plastic: PC+ABS
Waterproof Rating	IP67
Temperature Range	Metal: $-20^{\circ}\text{C} \sim +105^{\circ}\text{C}$ Plastic: $-20^{\circ}\text{C} \sim +85^{\circ}\text{C}$
Operating Voltage	4V
Light Color	Red, Blue, Green, White, Yellow, Red / Green
More to know	Absolute Maximum Ratings at $T_a=25^{\circ}\text{C}$ <ul style="list-style-type: none"> <li>- Power Dissipation: 80~120mW Max</li> <li>- Peak Forward Current: 100mA Max</li> <li>- Continuous Forward Current: 20~35mA Max</li> <li>- Lead Soldering Temperature: <math>260^{\circ}\text{C}</math> for 5 Seconds</li> </ul>

# Ordering Information

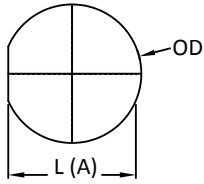
	1	2	3	4	5	6	7	8	9	10
<b>Specification</b> (L08) M8										
<b>Number of LED</b> (01) 1 LED										
<b>Light Color Style</b> (R) Red (B) Blue (G) Green										
			(W) White (A) Red/Green (Y) Yellow							
<b>LED Size</b> (A) $\varnothing$ 3mm										
			(B) $\varnothing$ 5mm							
<b>Electrical Type</b> (A) DC 4V										
<b>Assemble Style</b> > For Receptacle (S) Solder Type (P) 180° PCB Type										
<b>Housing Material</b> (M) Metal										
			(P) Plastic							
<b>Backshell</b> > For Receptacle (R) Circular / Rear Fastened										
<b>Waterproof Rating</b> (7) IP 67										
<b>More Information</b> > For Receptacle (001) Without Cable										

\* Design and specification are subject to change without notice.

# Physical Dimension

## Receptacle

Panel Cut-Out

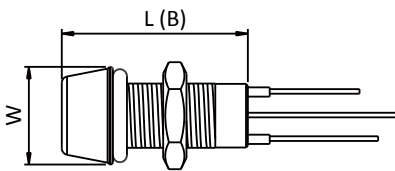


Size \ Dimension	L (A)	OD	L (B)	W
L08 - $\phi$ 3.0 (Plastic)	7.1	8.2	21.0	10.5
L08 - $\phi$ 3.0 (Metal)	7.1	8.2	20.0	10.5
L08 - $\phi$ 5.0 (Metal)	7.1	8.2	20.0	10.5

\* Maximum Panel Thickness: 6.5mm

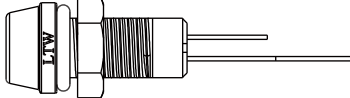
Dimensions are shown in millimeters

Connector Dimension

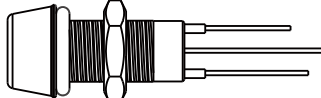


# Find Our Standard Products

## Receptacle

• Plastic connectors	<b>Receptacle</b>  3 Choose the color of LED: - Mono-color: Red (R) / Blue (B) / Green (G) / White (W) / Yellow (Y) The size of plastic LED: $\phi$ 3mm
	LED M8 Plastic                      L08-01 3 AAS-PR700 1

## Receptacle

• Metal connectors	<b>Receptacle</b>  3 Choose the color of LED: - Mono-color: Red (R) / Blue (B) / Green (G) / White (W) / Yellow (Y) - Multi-color: Red & Green (A) 4 Choose the size of LED ( $\phi$ 3mm (A) or $\phi$ 5mm (B))
	LED M8 Metal                      L08-01 3 4 AS-MR700 1



**Amphenol LTW Technology Co., Ltd. (Headquarter)**

9F., No.657-12, Zhongzheng Rd., Xinzhuang Dist., New Taipei City 242, Taiwan  
Telephone: +886-2-29085626 Fax: +886-2-29029787  
www.amphenolltw.com

**Shulin plant, Taiwan**

No.10, Shutan St., Shulin Dist., New Taipei City 238, Taiwan

**Kunshan plant, China**

No. 62 Da Tung Road, Peng Lang Street, Kunshan City ,  
Jiangsu Province, China  
Telephone: +86-512-5761-0501  
Fax: : +86-512-5761-0515

**For further information, please contact :**

Sales & Marketing Department | Email : sales@ltw-tech.com



Scan to visit our website