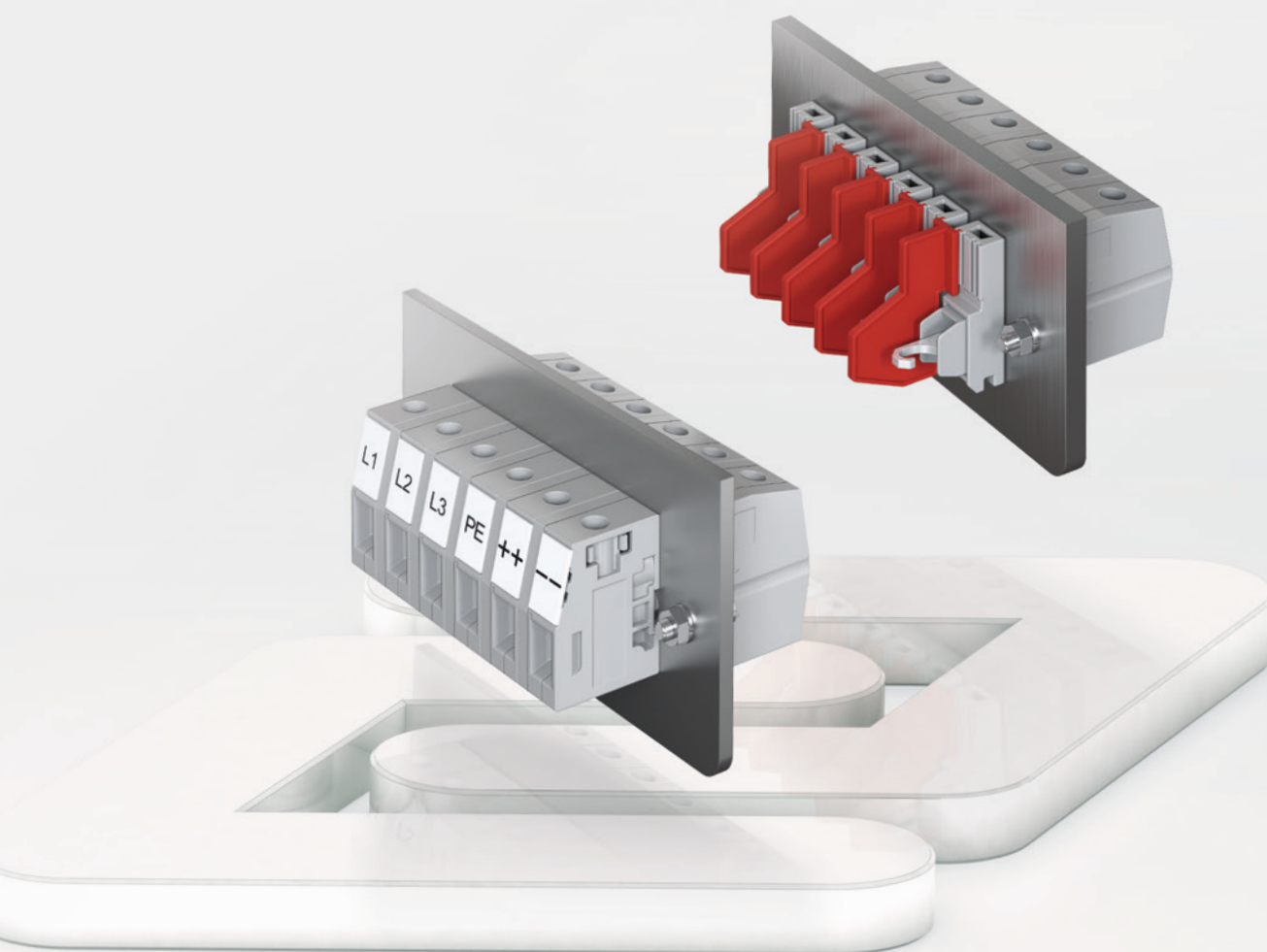


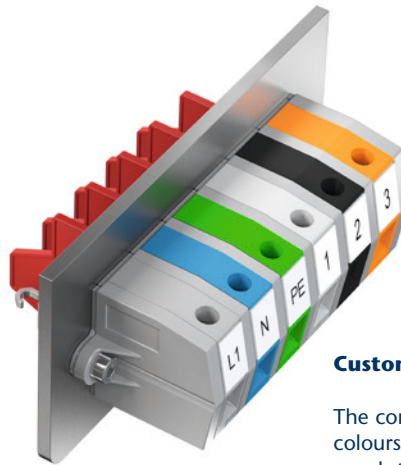
## FEED-THROUGH TERMINALS **SDK**



## Feed-through terminals SDK

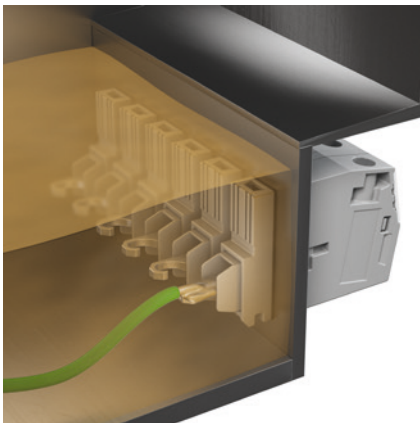
CONTA-CLIP's **SDKs** feed-through terminals provide a modular-based system for various device and housing applications. The coordinated system components can be combined to achieve various voltages – with a maximum voltage level of 1000 V (UL 600 V).

The insulated housing is made of polyamide 6.6 UL 94 V-0. The pegs can be used to link the housings together to form multi-pole units. Optional flange plates are available for improved mechanical stability. The **PMC SB** or **PMC BSTR** tags can be used to label the feed-through terminals.



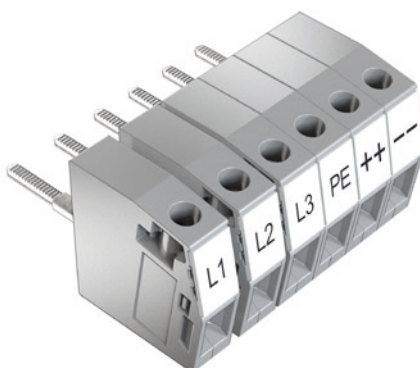
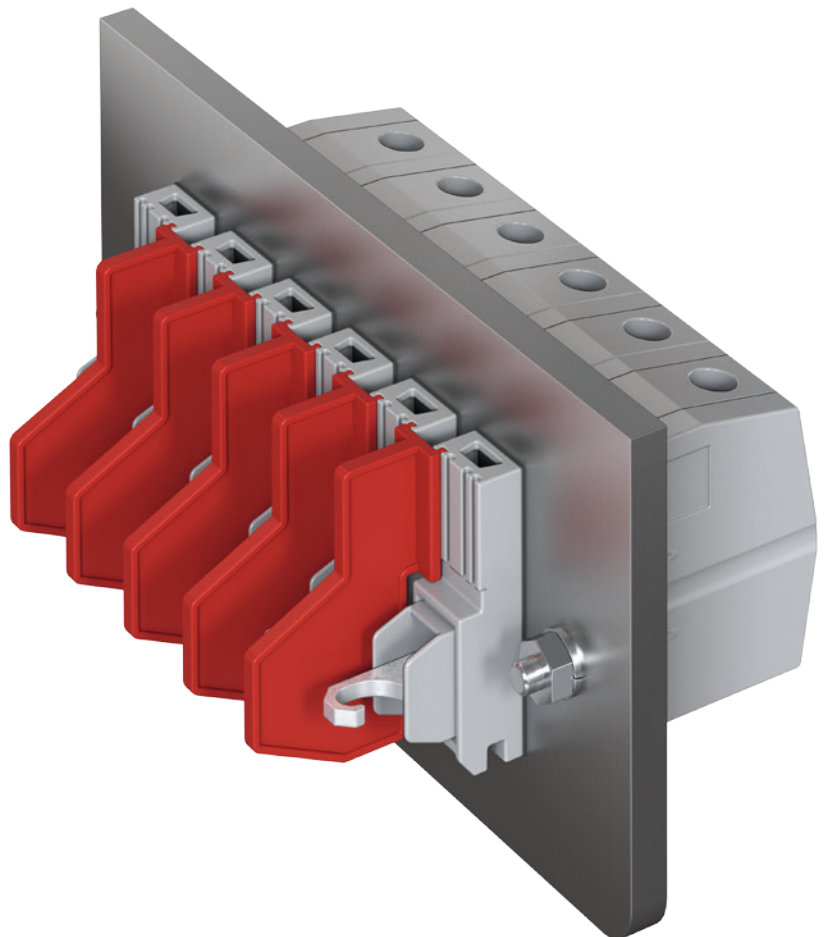
### Custom colours

The complete series is available in customized colours on request. The standard feed-through terminals are delivered in grey.



### High efficiency

The encapsulation of electrical components results in increased heat dissipation and improved electrical characteristics. The screw-solder variant of the **SDK** feed-through terminal is designed for the requirements of encapsulated devices. This variant provides the optimal seal for each application.

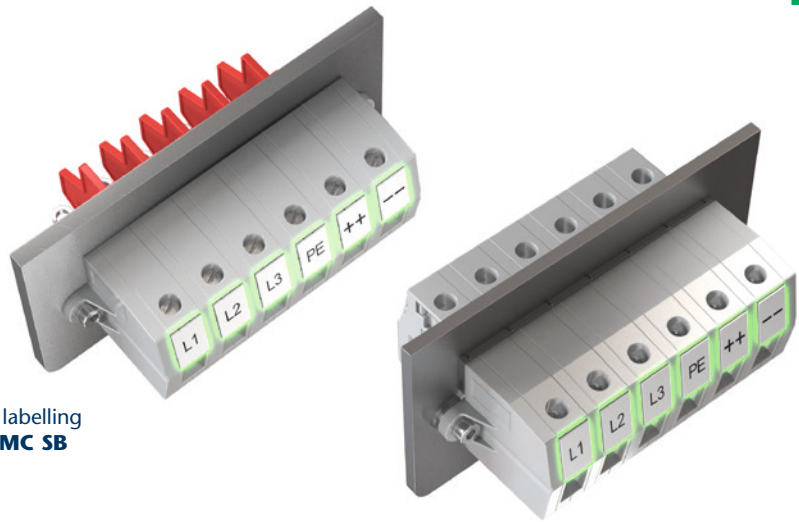


### Convenient to align side-by-side

The housing pegs can be used to easily and quickly configure customized block variants.

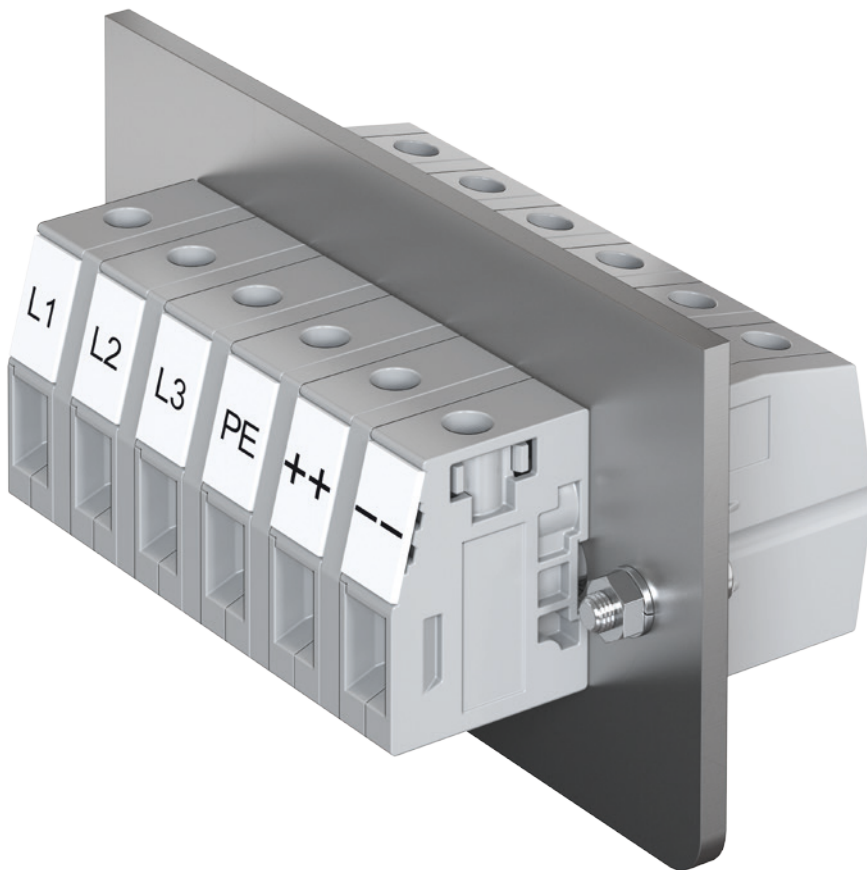
### Practical marking options

The feed-through terminals feature a labelling channel that can be used to attach **PMC SB** and **PMC BSTR** tags.

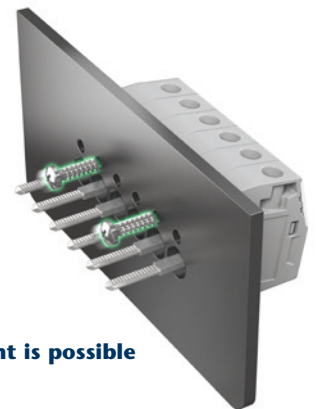


### Secure attachment

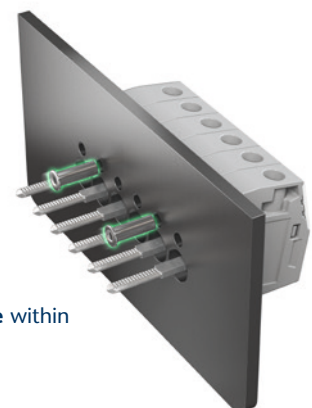
The additional attachment options ensure maximum stability for use in applications with high mechanical stress loads.



**Screw attachment is possible** within the housing

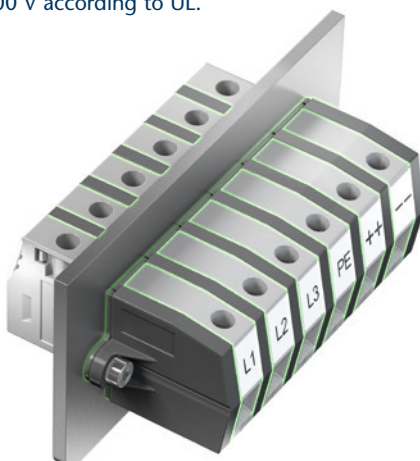


**Riveting is possible** within the housing

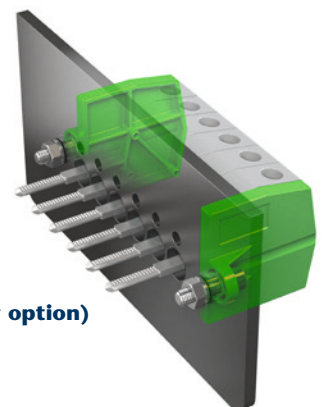


### A comprehensive line of accessories

When using cross-sections ranging from 0.2 to 25 mm<sup>2</sup> and contamination degree 3 the optional use of partition, spacer and adapter plates enables you to achieve a rated voltage of 1000 V according to IEC or 600 V according to UL.



**Housing flange (screw option)** outside of the housing



## Feed-through terminals SDK

### Screw connection system

### SDK ../2A without accessories

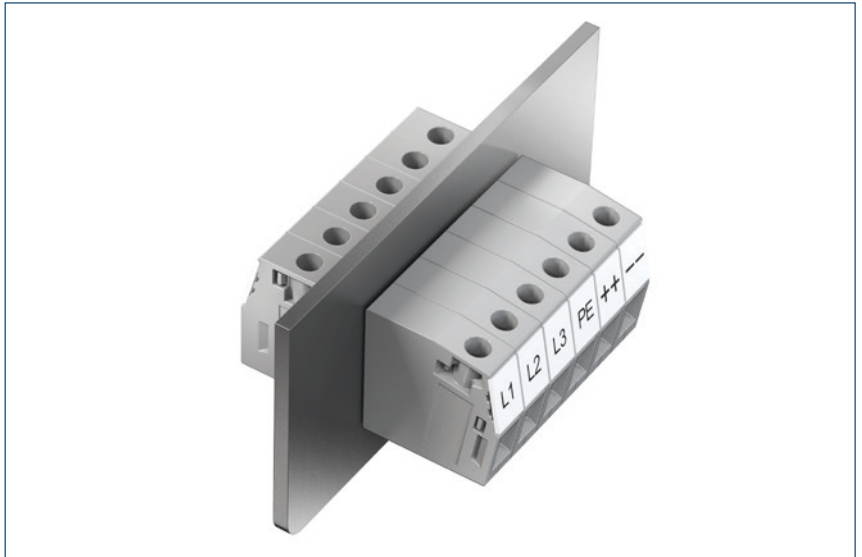
These rated specifications are achieved in accordance with IEC 60947-7-1 | UL | CSA without any additional accessories.

#### Ratings IEC 60947-7-1

Rated voltage, V	630
Rated current, A, SDK 4   10   16	32   57   76
Contamination degree	3
Thickness of panel, mm, SDK 4   10   16	1-4   1-4   1-6

#### Ratings UL / CSA

Rated voltage, V	300
Rated current, A, , SDK 4   10   16	30   65   85
Use group	B, D
Thickness of panel, mm, SDK 4   10   16	1-4   1-4   1-6

### SDK ../2A with spacer plates

These rated specifications are achieved in accordance with IEC 60947-7-1 | UL | CSA when used with spacer plates.

#### Ratings IEC 60947-7-1

Rated voltage, V	800
Rated current, A, SDK 4   10   16	32   57   76
Contamination degree	3
Thickness of panel, mm, SDK 4   10   16	1-4   1-4   1-6

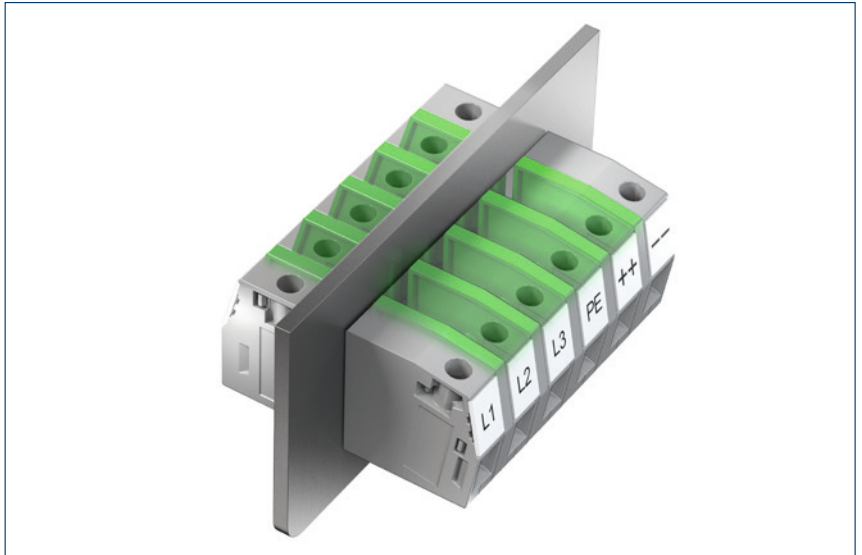
#### Ratings UL / CSA

Rated voltage, V	600
Rated current, A, , SDK 4   10   16	5   5   5
Use group	D
Thickness of panel, mm, SDK 4   10   16	1-4   1-4   1-6

#### Ratings UL / CSA

Rated voltage, V	300
Rated current, A, , SDK 4   10   16	30   65   85
Use group	C
Thickness of panel, mm, SDK 4   10   16	1-4   1-4   1-6

--



### SDK ../2A with spacer plates and adapter plates

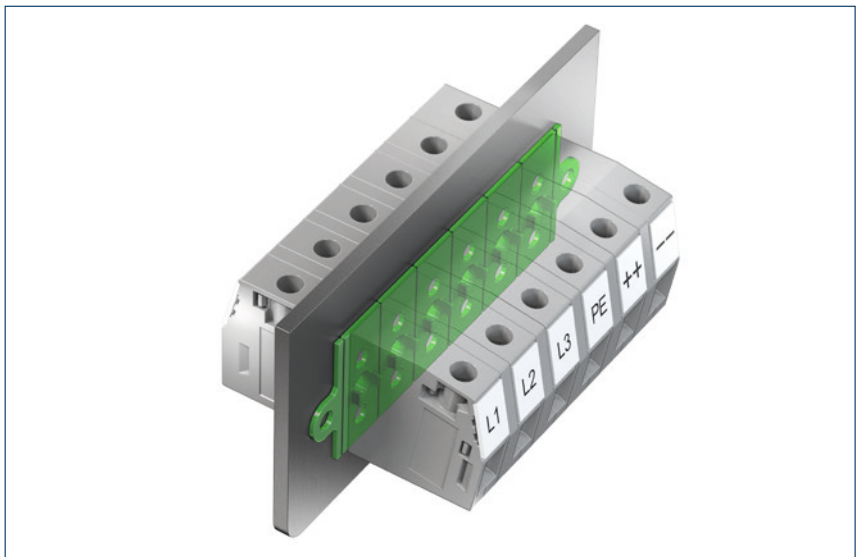
These rated specifications are achieved in accordance with IEC 60947-7-1 | UL | CSA when used with spacer plates and adapter plates.

#### Ratings IEC 60947-7-1

Rated voltage, V	1000
Rated current, A, SDK 4   10   16	32   57   76
Contamination degree	3
Thickness of panel, mm, SDK 4   10   16	1-3   1-3   1-5

#### Ratings UL / CSA

Rated voltage, V	600
Rated current, A, SDK 4   10   16	30   65   85
Use group	C
Thickness of panel, mm	1-3   1-3   1-5



**Screw/solder connection system****SDK .../1A/1L (1B) without accessories**

These rated specifications are achieved in accordance with IEC 60947-7-1 | UL | CSA without any additional accessories or encapsulation compound.

**Ratings IEC 60947-7-1**

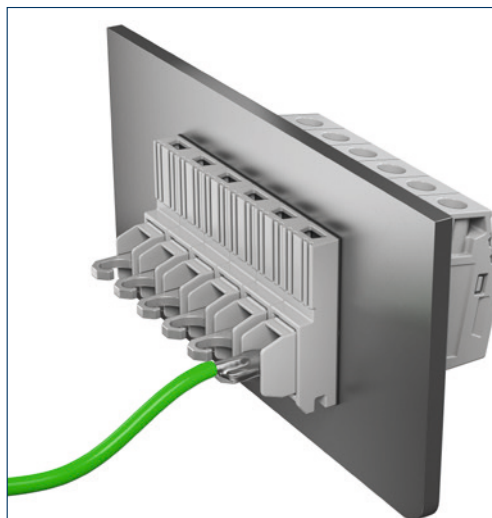
Rated voltage, V, SDK 4   10   16	250   320   400
Rated current, A, SDK 4   10   16	32   57   76
Contamination degree	3
Thickness of panel, mm, SDK 4   10   16	1-4   1-4   1-6

**Ratings UL / CSA**

Rated voltage, V	300
Rated current, A, SDK 4   10   16	30   65   85
Use group	B
Thickness of panel, mm, SDK 4   10   16	1-4   1-4   1-6

**Ratings UL / CSA**

Rated voltage, V	300
Rated current, A, SDK 4   10   16	10   10   10
Use group	D
Thickness of panel, mm, SDK 4   10   16	1-4   1-4   1-6

**SDK .../1A/1L (1B) with inner partition plates****SDK .../1A/1L (1B) with encapsulation compound**

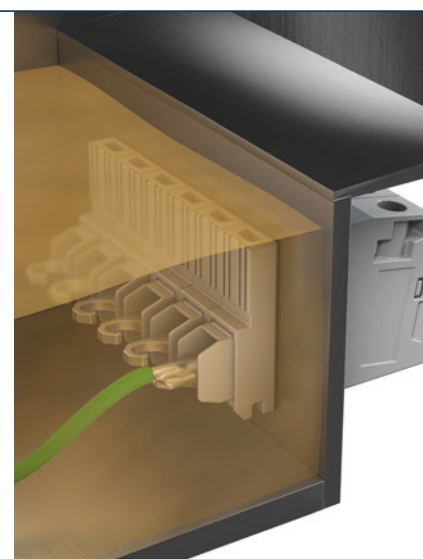
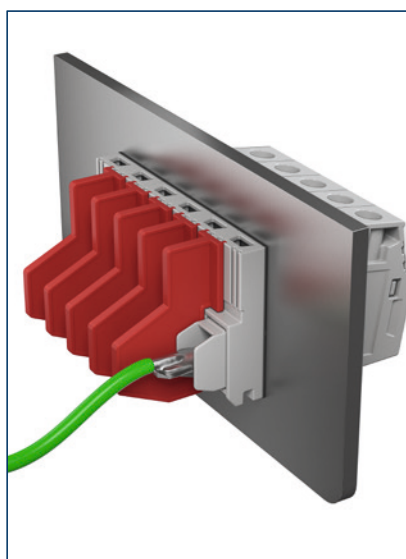
These rated specifications are achieved in accordance with IEC 60947-7-1 | UL | CSA when used with the inner partition plates or with the encapsulation compound without the partition.

**Ratings IEC 60947-7-1**

Rated voltage, V	630
Rated current, A, SDK 4   10   16	32   57   76
Contamination degree	3
Thickness of panel, mm, SDK 4   10   16	1-4   1-4   1-6

**Ratings UL / CSA**

Rated voltage, V	600
Rated current, A, SDK 4   10   16	5   5   5
Use group	D
Thickness of panel, mm, SDK 4   10   16	1-4   1-4   1-6

**SDK .../1A/1L (1B) with inner partition plates and spacer plates****SDK .../1A/1L (1B) with encapsulation compound and spacer plates**

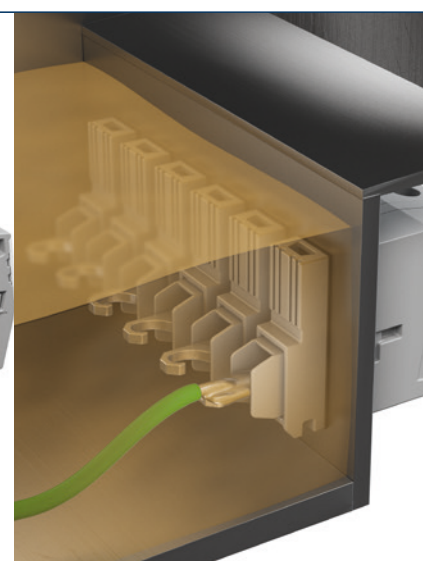
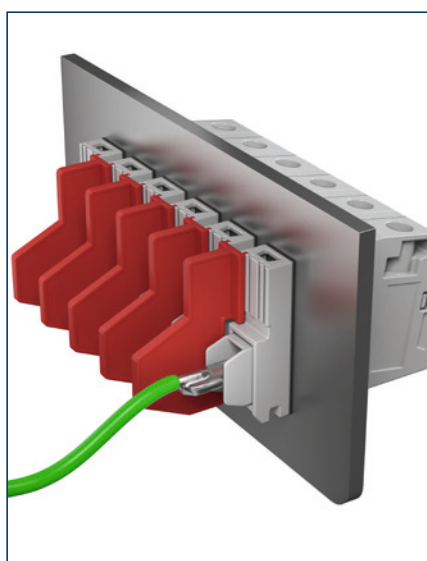
These rated specifications are achieved in accordance with IEC 60947-7-1 | UL | CSA when used with partition plates and the spacer plates or when used with encapsulation compound and the spacer plate.

**Ratings IEC 60947-7-1**

Rated voltage, V	1000
Rated current, A, SDK 4   10   16	32   57   76
Contamination degree	3
Thickness of panel, mm, SDK 4   10   16	1-4   1-4   1-6

**Ratings UL / CSA**

Rated voltage, V	600
Rated current, A, SDK 4   10   16	30   65   85
Use group	C
Thickness of panel, mm, SDK 4   10   16	1-4   1-4   1-6



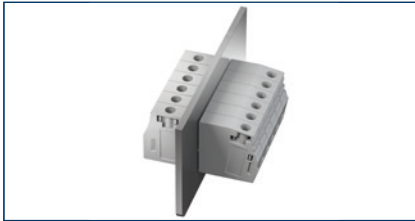
## Feed-through terminals SDK 4

### Screw connection system

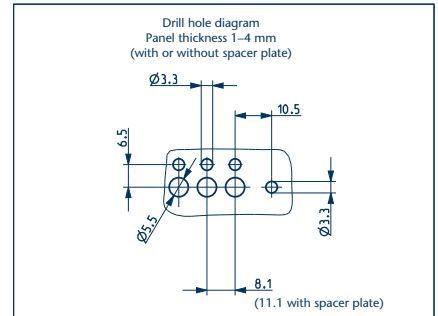
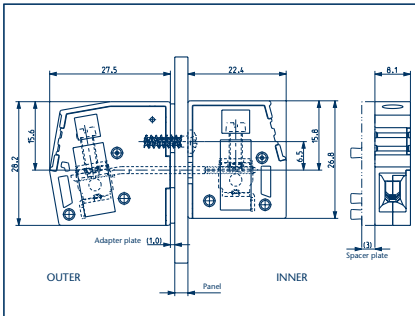


- Housing made from polyamide 6.6 UL 94 V-0

### SDK 4/2A



### Diagrams



### Scope of delivery SDK 4/2A

Inner part, outer part, inner mounting screw

### Connection type

Size (L x W x H), mm: Outer section

Size (L x W x H), mm: Inner section

### Type

Type / colour

**Cat. no.**

Type / colour (with housing pegs)

**Cat. no.**

Colour variants

### Ratings IEC 60947-7-1

Rated voltage, V

Rated current, A | Max. current capacity, A

Rated cross-section, mm<sup>2</sup>

Contamination degree

Thickness of panel, mm

Rated surge voltage, kV

Plug gauge acc. to EN 60 947-1 | Flamm. class acc. to UL 94

### Ratings UL / CSA

Rated voltage, V

Rated current, A

Rated cross-section, AWG

Use group

Thickness of panel, mm

### Screw connection

27.5 x 8.1 x 28.2

22.4 x 8.1 x 26.8

**Qty.**

SDK 4/2A GR

**17380.6**

50

SDK 4/2A/Z GR

**17381.6**

50

### Approval applied for!

630

800\*

1000\*\*

32 | 41

32 | 41

32 | 41

4

4

4

3

3

3

1-4

1-4

1-3\*\*

6

6

6

A4 | V0

A4 | V0

A4 | V0

### Approval applied for!

300

300\*

600\*

600\*\*

30 | 10

30

5

30

26-10

26-10

26-10

26-10

B | D

C

D

C

1-4

1-4

1-4

1-3\*\*

### Connection data

Single wire (solid) | Stranded (flexible) mm<sup>2</sup>

Finely-stranded|Finely-stranded (w/ferrules: DIN 46 228/1), mm<sup>2</sup>

Clamping area, mm<sup>2</sup>

Stripping length, mm

Torque, Nm | Screw

0.2 – 6 | -

0.2 – 6 | 0.2 – 4

0.2 – 6

10 mm

0.5 – 1 | slotted M3

### Features

Material of insulated housing | Temperature range

PA 6.6 UL 94 V-0

-40 bis +120°C

### Accessories

Set: spacer plate inside + outside

**Cat. no.**

SDK 4-DP GR

**17431.6**

50

Set: outer flange plate

**Cat. no.**

SDK 4-FP GR (use an M3x8 screw)

**17432.6**

50

Outer 6-pole adapter plate

**Cat. no.**

SDK 4-AP/6 GR

**17433.6**

10

Outer spacer plate

**Cat. no.**

Inner partition plate, solder connection

**Cat. no.**

Perforated foam seal

**Cat. no.**

Inner moulding plate

**Cat. no.**

Inner mounting screw

**Cat. no.**

BS-SDK4 3x10

**17438.6**

100

Screwdriver SDB

**Cat. no.**

SDB 0.6 x 3.5

**1086.0**

1

Quick marking PMC SB

**Cat. no.**

PMC BSTR 8x12/21 WH

**9410.7**

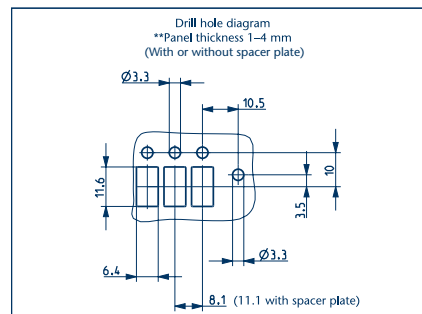
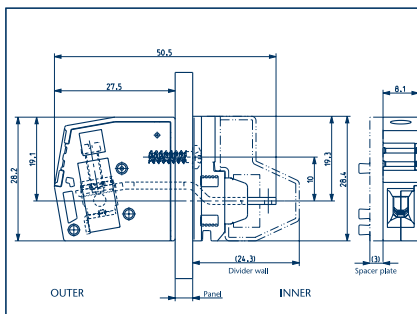
210

\* When using spacer plates and mounting on a conductive housing panel

\*\* When using spacer plates and adapter plates, and when mounting on a conductive housing panel

**Screw/solder connection system**

- Housing made from polyamide 6.6 UL 94 V-0

**SDK 4/1A/1L****Diagrams****Scope of delivery SDK 4/1A/1L**

Inner part, outer part, inner mounting screw and perforated foam seal

**Connection type**

Size (L x W x H), mm: Outer section  
Size (L x W x H), mm: Inner section

**Type**

Type / colour

**Cat. no.**

Type / colour (with housing pegs)

**Cat. no.**

Colour variants

**Ratings IEC 60947-7-1**

Rated voltage, V

Rated current, A | Max. current capacity, A

Rated cross-section, mm<sup>2</sup>

Contamination degree

Thickness of panel, mm

Rated surge voltage, kV

Plug gauge acc. to EN 60 947-1 | Flamm. class acc. to UL 94

**Ratings UL / CSA**

Rated voltage, V

Rated current, A

Rated cross-section, AWG

Use group

Thickness of panel, mm

**Screw-solder connection**

27.5 x 8.1 x 28.2

7.3 x 8.1 x 28.4

**Qty.**

SDK 4/1A/1L GR

**17382.6**

50

SDK 4/1A/1L/Z GR

**17383.6**

50

**Approval applied for!**

250\*

630\*\*

1000\*\*\*

32 | 41

32 | 41

32 | 41

4

4

4

3

3

3

1-4

1-4

1-4

6

6

6

A4 | V0

A4 | V0

A4 | V0

**Approval applied for!**

300\*

600\*\*

600\*\*\*

30 | 10

5

30

26-10

26-10

26-10

B | D

D

C

1-4

1-4

1-4

**Connection data**

Single wire (solid) | Stranded (flexible) mm<sup>2</sup>

Finely-stranded|Finely-stranded (w/ferrules: DIN 46 228/1), mm<sup>2</sup>

Clamping area, mm<sup>2</sup>

Stripping length, mm

Torque, Nm | Screw

0.2 – 6 | -

0.2 – 4 | 0.2 – 4

0.2 – 6

10 mm

0.5 – 1 | slotted M3

**Features**

Material of insulated housing | Temperature range

PA 6.6 UL 94 V-0

-40 to +120°C

**Accessories**

Set: spacer plate inside + outside

**Cat. no.**

Set: outer flange plate

**Cat. no.**

Outer 6-pole adapter plate

**Cat. no.**

Outer spacer plate

**Cat. no.**

Inner partition plate, solder connection

**Cat. no.**

Perforated foam seal

**Cat. no.**

Inner moulding plate

**Cat. no.**

Inner mounting screw

**Cat. no.**

Screwdriver SDB

**Cat. no.**

Quick marking PMC SB

**Cat. no.**

SDK 4-FP GR (use an M3x8 screw)

**17432.6**

50

SDK 4-DPA GR

**17434.6**

50

SDK 4-TWI RD

**17435.9**

50

SDK 4-SPI/10 DG

**17436.4**

10

SDK 4-VPI GR

**17437.6**

BS-SDK4 3x10

**17438.6**

100

SDB 0.6 x 3.5

**1086.0**

1

PMC BSTR 8x12/21 WH

**9410.7**

210

\* Without spacer plates, without encapsulation compound or without partition plates

\*\* When used without outer spacer plates, and when mounted on a conductive housing panel with use of encapsulation compound or inner partition plates

\*\*\* When used with outer spacer plates, and when mounted on a conductive housing panel with use of encapsulation compound or inner partition plates

## Feed-through terminals SDK 10

### Screw connection system

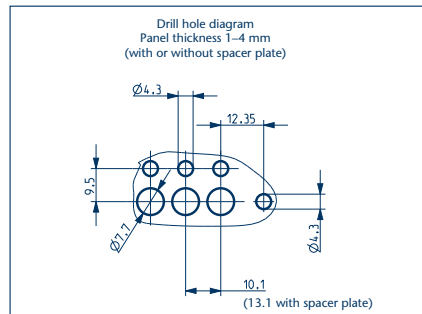
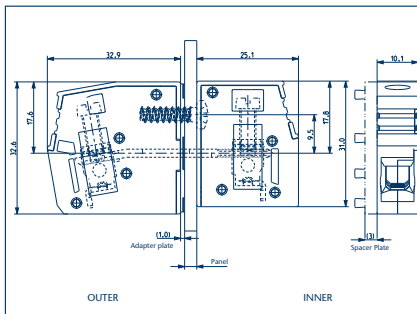


- Housing made from polyamide 6.6 UL 94 V-0

### SDK 10/2A



### Diagrams



### Scope of delivery SDK 10/2A

Inner part, outer part, inner mounting screw

### Connection type

Size (L x W x H), mm: Outer section

Size (L x W x H), mm: Inner section

### Type

Type / colour

**Cat. no.**

Type / colour (with housing pegs)

**Cat. no.**

Colour variants

### Ratings IEC 60947-7-1

Rated voltage, V

Rated current, A | Max. current capacity, A

Rated cross-section, mm<sup>2</sup>

Contamination degree

Thickness of panel, mm

Rated surge voltage, kV

Plug gauge acc. to EN 60 947-1 | Flamm. class acc. to UL 94

### Ratings UL / CSA

Rated voltage, V

Rated current, A

Rated cross-section, AWG

Use group

Thickness of panel, mm

### Screw connection

32,9 x 10,1 x 32,6

25,1 x 10,1 x 31,0

**Qty.**

SDK 10/2A GR

**17386.6**

50

SDK 10/2A/Z GR

**17387.6**

50

### Approval applied for!

630

800\*

1000\*\*

57 | 76

57 | 76

57 | 76

10

10

10

3

3

3

1-4

1-4

1-3\*\*

6

6

6

A6 I V0

A6 I V0

A6 I V0

### Approval applied for!

300

300\*

600\*

600\*\*

65 | 10

65

5

65

20-6

20-6

20-6

20-6

B | D

C

D

C

1-4

1-4

1-4

1-3\*\*

### Connection data

Single wire (solid) | Stranded (flexible) mm<sup>2</sup>

Finely-stranded|Finely-stranded (w/ferrules: DIN 46 228/1), mm<sup>2</sup>

Clamping area, mm<sup>2</sup>

Stripping length, mm

Torque, Nm | Screw

0,2-16 | 0,2-16

0,2-16 | 0,2-10

0,2-16

12 mm

1,2-2,4 | slotted M4

### Features

Material of insulated housing | Temperature range

PA 6.6 UL 94 V-0

-40 bis +120°C

### Accessories

Set: spacer plate inside + outside

**Cat. no.**

SDK 10-DP GR

**17441.6**

50

Set: outer flange plate

**Cat. no.**

SDK 10-FP GR (use an M4x10 screw)

**17442.6**

50

Outer 6-pole adapter plate

**Cat. no.**

SDK 10-AP/6 GR

**17443.6**

10

Outer spacer plate

**Cat. no.**

Inner partition plate, solder connection

**Cat. no.**

Perforated foam seal

**Cat. no.**

Inner moulding plate

**Cat. no.**

Inner mounting screw

**Cat. no.**

BS-SDK 10/16

**17448.6**

100

Screwdriver SDB

**Cat. no.**

SDK 0,8 X 4,0

**1087.0**

1

Quick marking PMC SB

**Cat. no.**

PMC BSTR 10X12/10 WH

**9433.7**

100

\* When using spacer plates and mounting on a conductive housing panel

\*\* When using spacer plates and adapter plates, and when mounting on a conductive housing panel



## Screw/solder connection system

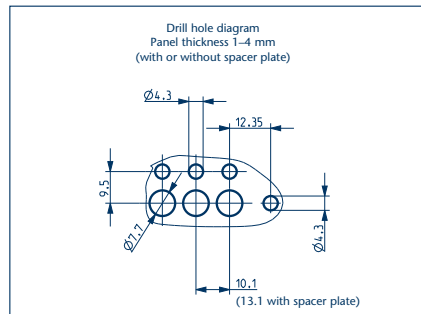
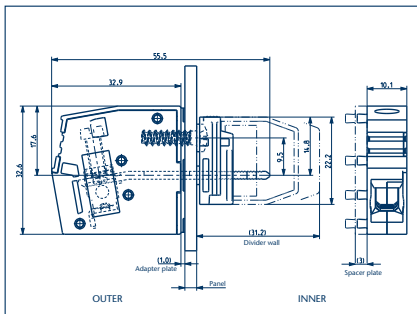


- Housing made from polyamide 6.6 UL 94 V-0

## SDK 10/1A/1L



## Diagrams



## Scope of delivery SDK 10/1A/1L

Inner part, outer part, inner mounting screw and perforated foam seal

## Connection type

Size (L x W x H), mm: Outer section

Size (L x W x H), mm: Inner section

## Type

Type / colour

**Cat. no.**

Type / colour (with housing pegs)

**Cat. no.**

Colour variants

## Ratings IEC 60947-7-1

Rated voltage, V

Rated current, A | Max. current capacity, A

Rated cross-section, mm<sup>2</sup>

Contamination degree

Thickness of panel, mm

Rated surge voltage, kV

Plug gauge acc. to EN 60 947-1 | Flamm. class acc. to UL 94

## Ratings UL / CSA

Rated voltage, V

Rated current, A

Rated cross-section, AWG

Use group

Thickness of panel, mm

## Screw-solder connection

32,9 x 10,1 x 32,6

9,3 x 10,1 x 22,2

**Qty.**

SDK 10/1A/1L GR

**17388.6**

50

SDK 10/1A/1L GR

**17389.6**

50

## Approval applied for!

320\* 630\*\* 1000\*\*\*

57 | 76 57 | 76 57 | 76

10 10 10

3 3 3

1-4 1-4 1-3\*\*\*

4 6 6

A6 | V0 A6 | V0 A6 | V0

## Approval applied for!

300\* 600\*\* 600\*\*\*

65 | 10 5 65

20-6 20-6 20-6

B | D D C

1-4 1-4 1-3\*\*\*

## Connection data

Single wire (solid) | Stranded (flexible) mm<sup>2</sup>

Finely-stranded|Finely-stranded (w/ferrules: DIN 46 228/1), mm<sup>2</sup>

Clamping area, mm<sup>2</sup>

Stripping length, mm

Torque, Nm | Screw

## Features

Material of insulated housing | Temperature range

## Accessories

Set: spacer plate inside + outside

**Cat. no.**

Set: outer flange plate

**Cat. no.**

Outer 6-pole adapter plate

**Cat. no.**

Outer spacer plate

**Cat. no.**

Inner partition plate, solder connection

**Cat. no.**

Perforated foam seal

**Cat. no.**

Inner moulding plate

**Cat. no.**

Inner mounting screw

**Cat. no.**

Screwdriver SDB

**Cat. no.**

Quick marking PMC SB

**Cat. no.**

**Qty.**

SDK 10 FP GR (use an M4x10 screw)

**17442.6**

50

SDK 10-AP/6 GR

**17443.6**

10

SDK 10-DPA GR

**17444.6**

50

SDK 10-TWI RD

**17445.6**

50

SDK 10-SPI/10 DG

**17446.6**

100

SDK 10-VPI GR

**17447.6**

50

BS-SDK 10/16

**17448.6**

100

SDK 0,8 X 4,0

**1087.0**

1

PMC BSTR 10X12/10 WH

**9433.7**

100

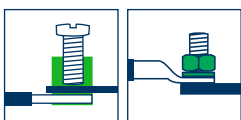
\* Without spacer plates, without encapsulation compound or without partition plates

\*\* When used without outer spacer plates, and when mounted on a conductive housing panel with use of encapsulation compound or inner partition plates

\*\*\* When used with outer spacer plates and adapter plates, and when mounted on a conductive housing panel with use of encapsulation compound or inner partition plates



## Screw / Stud connection system

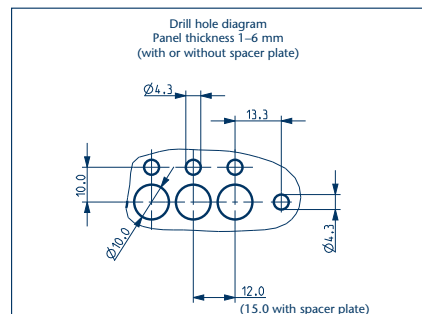
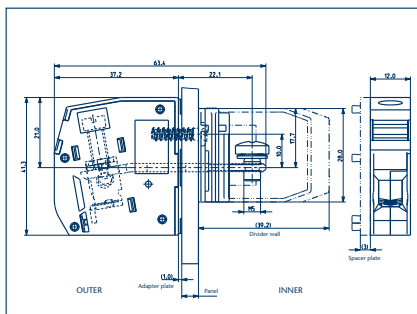


- Housing made from polyamide 6.6 UL 94 V-0

## SDK 16/1A/1B



## Diagrams



## Scope of delivery SDK 16/1A/1B

Inner part, outer part, inner mounting screw and perforated foam seal

## Connection type

Size (L x W x H), mm: Outer section

Size (L x W x H), mm: Inner section

## Type

Type / colour

Cat. no.

Type / colour (with housing pegs)

Cat. no.

Colour variants

## Ratings IEC 60947-7-1

Rated voltage, V

Rated current, A | Max. current capacity, A

Rated cross-section, mm<sup>2</sup>

Contamination degree

Thickness of panel, mm

Rated surge voltage, kV

Plug gauge acc. to EN 60 947-1 | Flamm. class acc. to UL 94

## Ratings UL / CSA

Rated voltage, V

Rated current, A

Rated cross-section, AWG

Use group

Thickness of panel, mm

## Screw / Stud connection

37,2 x 12,0 x 41,3

9,3 x 12,0 x 28,0

Qty.

SDK 16/1A/1B GR

17396.6

50

SDK 16/1A/1B GR

17397.6

50

## Approval applied for!

400\* 630\*\* 1000\*\*\*

76 | 101 76 | 101 76 | 101

16 16 16

3 3 3

1-6 1-6 1-5\*\*\*

4 6 6

A7 | V0 A7 | V0 A7 | V0

## Approval applied for!

300\* 600\*\* 600\*\*\*

85 | 10 5 85

16-4 16-4 16-4

B | D D C

1-6 1-6 1-5\*\*\*

## Connection data

Single wire (solid) | Stranded (flexible) mm<sup>2</sup>

Finely-stranded|Finely-stranded (w/ferrules: DIN 46 228/1), mm<sup>2</sup>

Clamping area, mm<sup>2</sup>

Stripping length, mm

Torque, Nm | Screw, outer part

Torque, Nm | Screw, inner part

## Features

Material of insulated housing | Temperature range

## Accessories

Set: spacer plate inside + outside

Cat. no.

Set: outer flange plate

Cat. no.

Outer 6-pole adapter plate

Cat. no.

Outer spacer plate

Cat. no.

Inner partition plate, solder connection

Cat. no.

Perforated foam seal

Cat. no.

Inner moulding plate

Cat. no.

Inner mounting screw

Cat. no.

Screwdriver SDB

Cat. no.

Quick marking PMC SB

Cat. no.

PA 6.6 UL 94 V-0

-40 bis +120°C

Qty.

SDK 16-FP GR (use an M4x16 screw)

17452.6

50

SDK 16-AP/6 GR

17453.6

10

SDK 16-DPA GR

17454.6

50

SDK 16-TWI RD

17455.6

50

SDK 16-SPI/10 DG

17456.6

100

SDK 16-VPI GR

17457.6

50

BS-SDK 10/16

17448.6

100

SDK 0,8 X 4,0

1087.0

1

PMC BSTR 10X12/10 WH

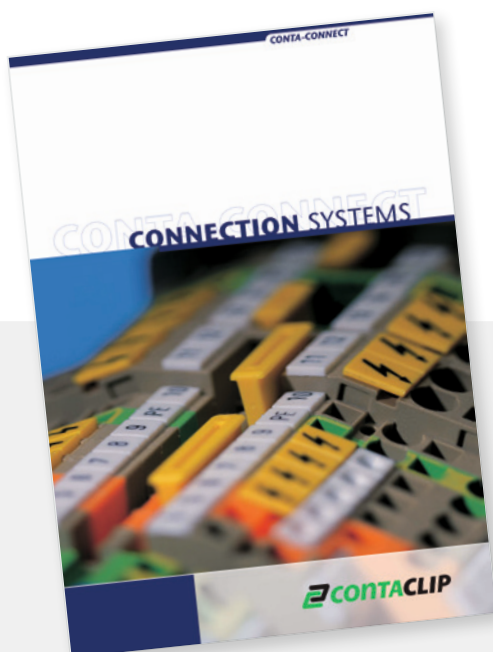
9433.7

100

\* Without spacer plates, without encapsulation compound or without partition plates

\*\* When used without outer spacer plates, and when mounted on a conductive housing panel with use of encapsulation compound or inner partition plates

\*\*\* When used with outer spacer plates and adapter plates, and when mounted on a conductive housing panel with use of encapsulation compound or inner partition plates



[www.conta-clip.com](http://www.conta-clip.com)

This document contains supplemental information describing our connection system product portfolio.

For the entire product range, please refer to our main catalogue CONTA-CON, or check out web page at [www.conta-clip.com](http://www.conta-clip.com).

**CONTA-CONNECT**  
[Connection Systems]



**CONTA-ELECTRONICS**  
[Electronics]



**CONTA-CON**  
[PCB Connectors]



EN 11|15 All rights reserved.